

London HogWatch 2022 Barnes Survey – 4th Deployment

In total, 76 cameras were deployed in Barnes Common & Putney Lower Common (30), Barn Elms and Fishing Ponds (12), Leg O'Mutton (15), Leg O'Mutton towpath (5), and Palewell Common (14). Of these, 6 failed and did not record any pictures. In total, 25 species were seen including 8 mammal species and 17 bird species. Hedgehogs were found on 4 cameras, in Barnes Common & Putney Lower Common (1), Barn Elms and Fishing Ponds (2), and Leg O'Mutton (1). Other mammal species found included badgers, foxes, cats, dogs, mice, rats and squirrels (Table 1, Figure 2). Birds of conservation concern recorded include starlings, which are on the red list, and amber listed species including woodpigeons, dunnocks, moorhen, song thrushes, stock doves, and wrens. Other notable bird species recorded included tufted ducks and herons (Table 1, Figure 3). Species maps for hedgehogs, badgers, and foxes were also made to assess their distribution across the five survey areas (Figure 4).

London HogWatch has undertaken surveys in the Barnes area since 2018. In Barnes Common & Putney Lower Common, hedgehog trap rates have declined from 0.032 in 2018 (sightings at 24% of sites) to 0.002 in 2022 (sightings at 3% of sites). Maps were made to visualise these changes in hedgehog and badger sightings between the survey years. Figure 5 shows hedgehog sightings across Barnes Common & Putney Lower Common in 2018 and 2019. Figure 6 shows changes in hedgehog and badger sightings across Barnes Common & Putney Lower Common across 2020, 2021, and 2022. Only in 2021 were any badgers seen North of the railway line in Barnes Common & Putney Lower Common. This is also the only year we found no hedgehog contacts on the common. Figure 7 shows changes in both species' sightings across the whole Barnes area (except for Palewell Common) between 2020 and 2022. Hedgehog activity dramatically declined in Barnes Elms and Fishing Ponds from a trap rate of 0.41 (sightings at 58% of sites) in 2020 to 0.016 (sightings at 18% of sites) in 2022. These figures display a decline in hedgehogs in the Barnes area within our monitoring timeframe.

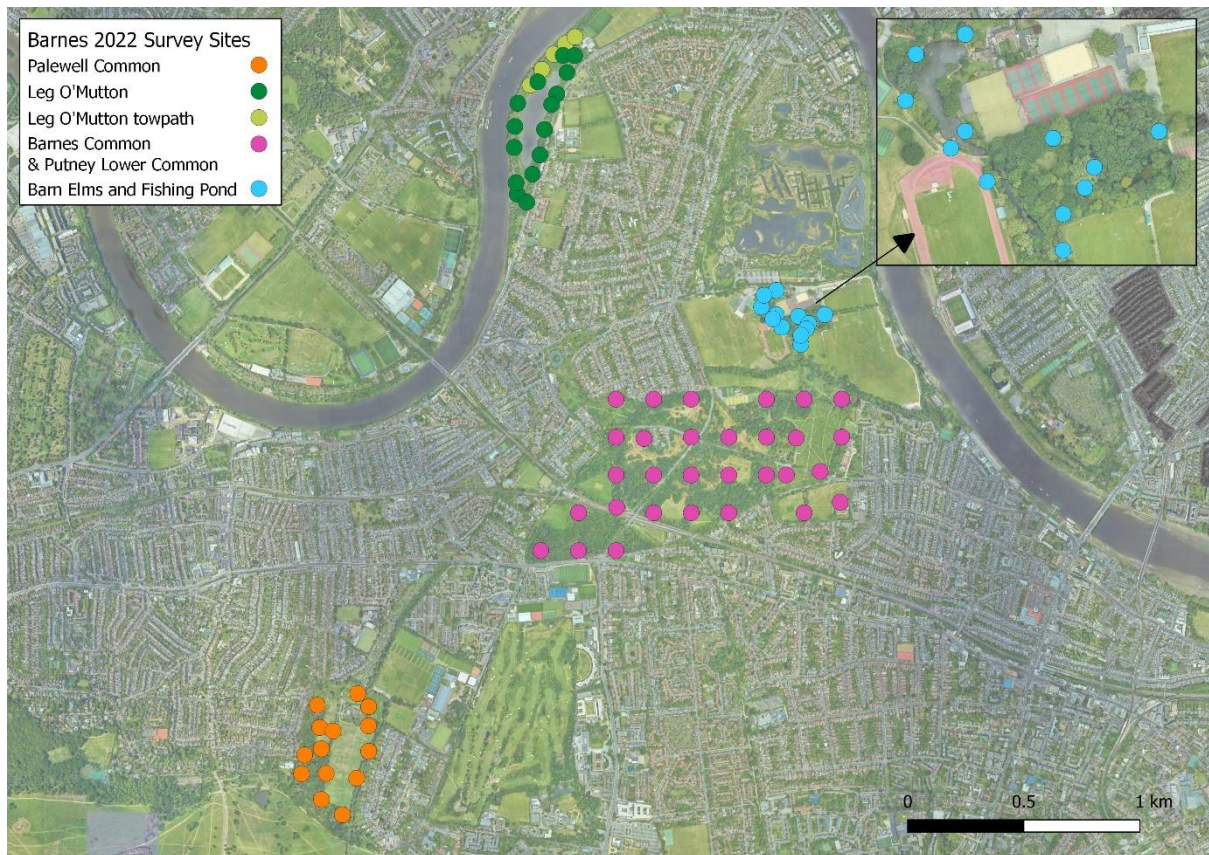


Figure 1. Camera locations for the Barnes Common & Putney Lower Common, Barn Elms and Fishing Ponds, Leg O'Mutton, and Palewell Common 2022 surveys in Barnes.

Table 2. Results of the 2022 Barnes Survey. Overall trapping rate = number of sightings / efforts for each survey area.

Species	Number of Sightings	Number of Sites Present	Overall Trapping Rate
Barnes Common & Putney Lower Common 2022 Survey			
Sites: 30 Effort: 576 (camera trap nights)			
Badger	6	2 (7%)	0.010
Blackbird	43	6 (20%)	0.075
Cat	36	8 (27%)	0.063
Dog	49	16 (53%)	0.085
Dunnock	4	2 (7%)	0.007
Fox	259	26 (87%)	0.450
Great tit	4	2 (7%)	0.007
Hedgehog	1	1 (3%)	0.002
Jay	1	1 (3%)	0.002
Magpie	30	5 (17%)	0.052
Mouse	85	8 (27%)	0.148
Rat	39	8 (27%)	0.068
Robin	122	13 (43%)	0.212
Song thrush	10	3 (10%)	0.017
Squirrel	74	13 (43%)	0.128

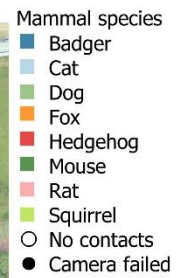
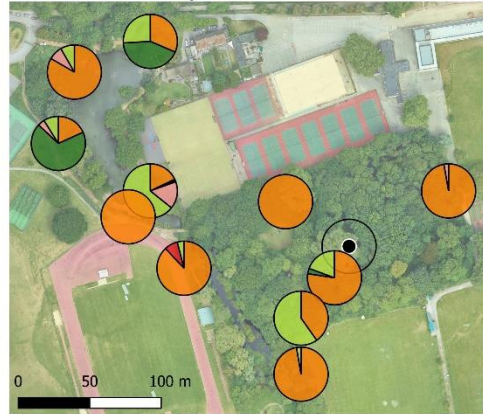
Wood pigeon	26	7 (23%)	0.045
Wren	36	13 (43%)	0.063
Barn Elms and Fishing Ponds 2022 Survey Sites: 11 (1 failed) Effort: 193 (camera trap nights)			
Canada goose	3	1 (9%)	0.016
Crow	15	2 (18%)	0.078
Fox	320	11 (100%)	1.658
Great tit	2	2 (18%)	0.010
Hedgehog	3	2 (18%)	0.016
Jay	1	1 (9%)	0.005
Moorhen	5	2 (18%)	0.026
Mouse	210	4 (36%)	1.088
Rat	33	4 (36%)	0.171
Robin	126	6 (55%)	0.653
Squirrel	182	8 (73%)	0.943
Stock dove	6	3 (27%)	0.031
Tufted duck	3	1 (9%)	0.016
Wood pigeon	15	7 (64%)	0.078
Wren	14	4 (36%)	0.073
Leg O'Mutton 2022 Survey Sites: 13 (2 failed) Effort: 256 (camera trap nights)			
Blackbird	33	5 (38%)	0.129
Cat	48	5 (38%)	0.188
Collared dove	5	1 (8%)	0.020
Dog	76	7 (%)	0.297
Dunnoek	1	1 (8%)	0.004
Fox	1014	13 (100%)	3.961
Great tit	5	2 (15%)	0.020
Hedgehog	2	1 (8%)	0.008
Jay	16	2 (15%)	0.063
Magpie	1	1 (8%)	0.004
Moorhen	1	1 (8%)	0.004
Mouse	51	7 (%)	0.199
Rat	47	6 (46%)	0.184
Robin	96	7 (%)	0.375
Song thrush	19	7 (%)	0.074
Squirrel	74	9 (69%)	0.289
Starling	3	1 (8%)	0.012
Stock dove	2	1 (8%)	0.008
Wood pigeon	50	6 (46%)	0.195
Wren	4	3 (23%)	0.016
Leg O'Mutton Towpath 2022 Survey Sites: 4 (1 failed) Effort: 56 (camera trap nights)			
Blackbird	9	2 (50%)	0.161
Dog	57	4 (100%)	1.018
Fox	59	4 (100%)	1.054

Mouse	25	3 (75%)	0.446
Rat	1	1 (25%)	0.018
Robin	4	2 (50%)	0.071
Song thrush	19	2 (50%)	0.339
Squirrel	106	4 (100%)	1.893
Wood pigeon	3	2 (50%)	0.054
Palewell Common 2022 Survey Sites: 12 (2 failed) Effort: 222 (camera trap nights)			
Badger	65	7 (58%)	0.293
Blackbird	6	3 (25%)	0.027
Cat	14	4 (33%)	0.063
Crow	19	3 (25%)	0.086
Dog	299	9 (75%)	1.347
Fox	179	11 (92%)	0.806
Great tit	3	2 (17%)	0.014
Heron	1	1 (8%)	0.005
Magpie	23	6 (50%)	0.104
Mouse	2	1 (8%)	0.009
Robin	108	6 (50%)	0.486
Song thrush	5	4 (33%)	0.023
Squirrel	52	9 (75%)	0.234
Starling	2	1 (8%)	0.009
Stock dove	1	1 (8%)	0.005
Wood pigeon	389	9 (75%)	1.752
Wren	3	2 (17%)	0.014

Leg O'Mutton plus towpath



Barn Elms and Fishing Ponds



Palewell Common



Barnes Common & Putney Lower Common

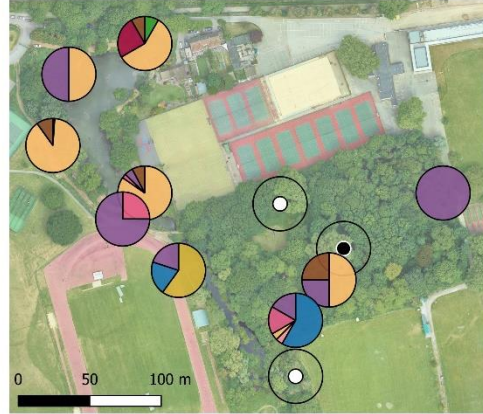


Figure 3. Pie charts showing the ratio of mammal species sightings for the Barnes 2022 survey sites. Cameras with no mammal sightings are in white, cameras that failed are in black.

Leg O'Mutton plus towpath



Barn Elms and Fishing Ponds



Palewell Common



Barnes Common & Putney Lower Common

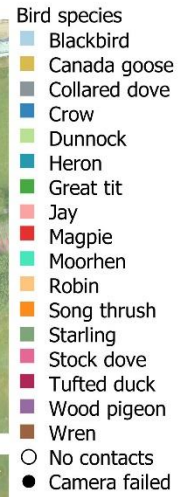


Figure 3. Pie charts showing the ratio of bird species sightings for the Barnes 2022 survey sites. Cameras with no bird sightings are in white, cameras that failed are in black.

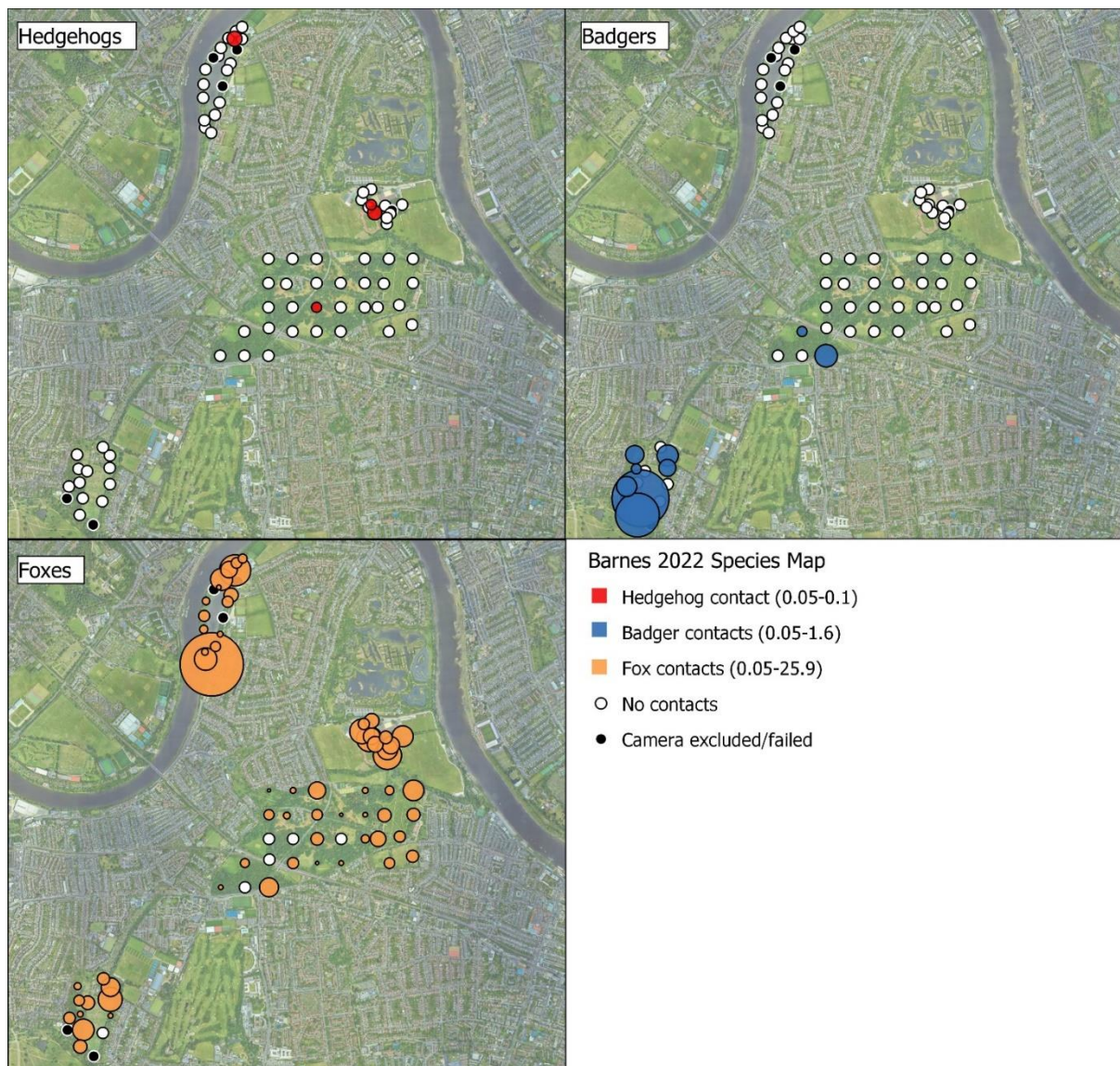


Figure 4. Species maps for hedgehogs, badgers, and foxes from the Barnes 2022 surveys. Red indicates hedgehog presence, blue indicates badger presence, and orange indicates fox presence. Larger circles indicate more sightings. Cameras with no species sightings are in white, cameras that failed are in black.



Figure 5. Hedgehog sightings across Barnes Common & Putney Lower Common in 2018 and 2019. Red indicates hedgehog presence and white indicates absence. The 2018 results have been scaled by trap rate (larger circles indicate more sightings).



Figure 6. A comparison of hedgehog and badger sightings across Barnes Common & Putney Lower Common between 2020-2022. Red indicates hedgehog presence and blue indicates badger presence. Larger circles indicate more sightings recorded. White indicates absence, and black means the camera failed or was excluded.

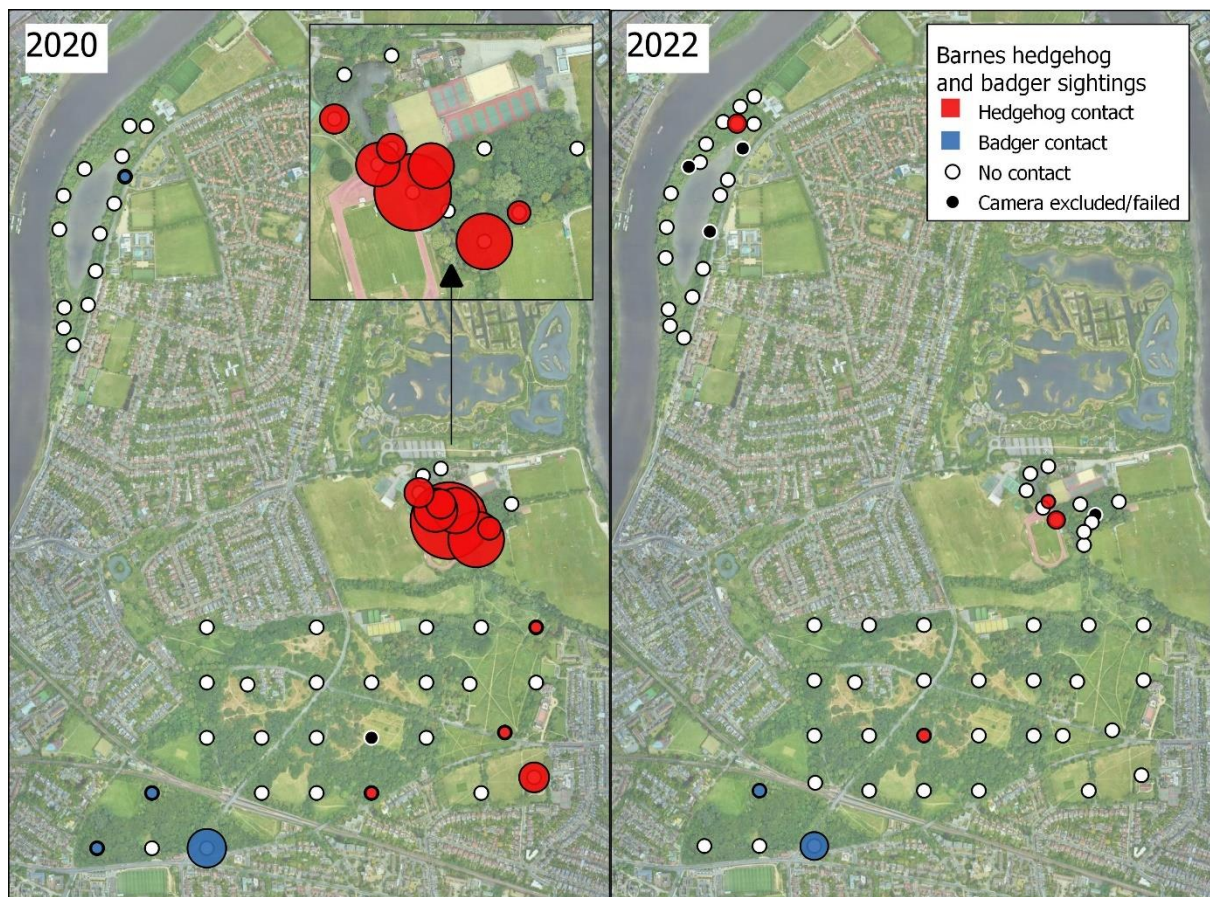


Figure 7. A comparison of hedgehog and badger sightings across the Barnes survey areas between 2020-2022. Red indicates hedgehog presence and blue indicates badger presence. Larger circles indicate more sightings recorded. White indicates absence, and black means the camera failed or was excluded. Palewell Common has not been included as it was not surveyed in 2020.